

# EZ ICCs with the Canon Pro-100

I will show you an easy method to use Custom ICCs that will allow proper matching of paper and ink to yield accurate colors. In the past in order to use Custom ICCs, you had to own more professional photoediting software like Adobe Photoshop, Adobe Lightroom, Apple Aperture etc. or had to acquire printing managers like Qimage etc. Adobe Photoshop Elements Version 6 and newer also provides this. Since some of these software suites cost were expensive and complicated, many users could not take advantage of using custom ICCs in a simple fashion.

Epson had provided the ability to do so with their printers that were 13" wide and larger. Canon did not. On the Pro-100 that situation has changed and it is a welcome update and has been brought forward into an up to date offering.

Even if you did own the professional suites, sometimes you would use a consumer level application such as a card making application or a photobooth real time shoot and print application that did not allow color management and thus you were not able to utilize color management for accurate printing results in a simple way. That has all changed now. So for anybody that has ANY printing application, the use of custom ICCs is now always available.

With the professional applications, the software would take care of adjusting the colors and also manage the printing of the colors. Your Adobe application would typically have an option that says "Let Photoshop manage colors". With consumer level applications, the software hands off the color printing responsibilities to the printer driver as a default when no option is given. The option is also even available with professional applications where it says " Let Printer Driver manage colors".

So to use the easy method of Custom ICCs, you always let the software let the print driver manage colors.

## Installing ICC Profiles

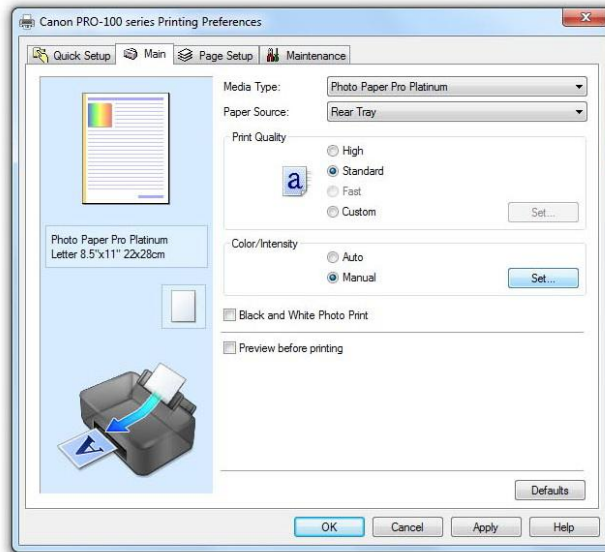
After downloading ICC profiles, they can be installed in the correct location by allowing Windows to do so automatically by right clicking on the ICC and then choosing Install.

Installed profiles are located in *Windows/System32/Spool/Drivers/Color*

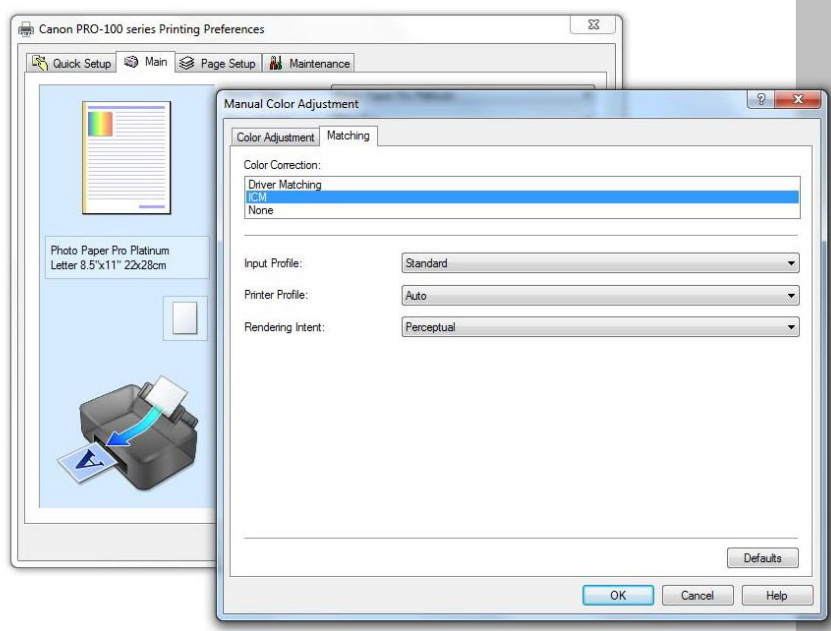
# Setting Up The Print Driver in Windows 7

You can set up the print driver to always use a certain ICC profile or choose it just before printing. The choice is up to you. It is done in generally a similar fashion.

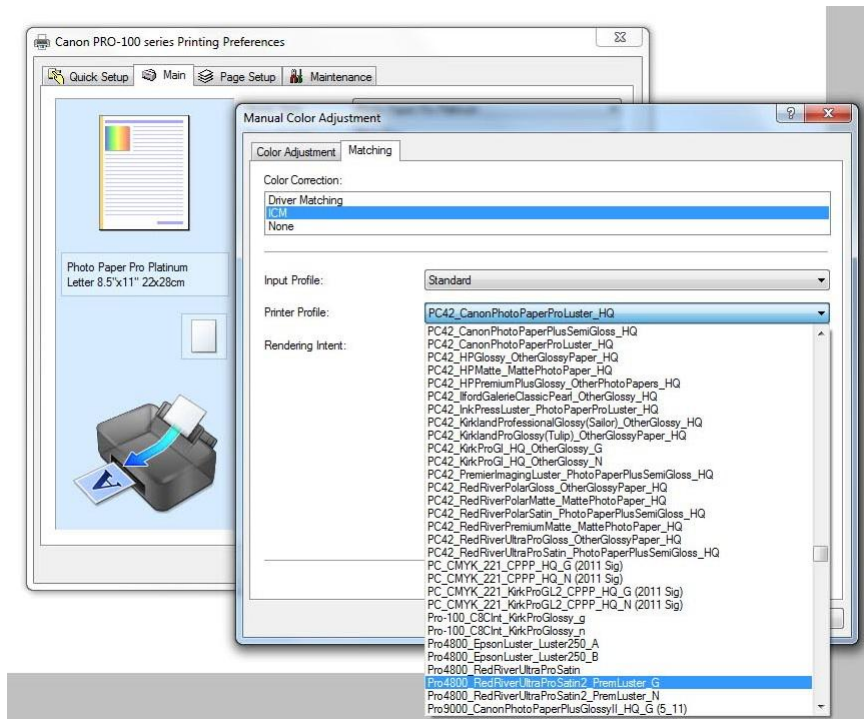
When you have selected the printer in Printers and Drivers window, you click on the Pro-100 and choose **Preferences**.



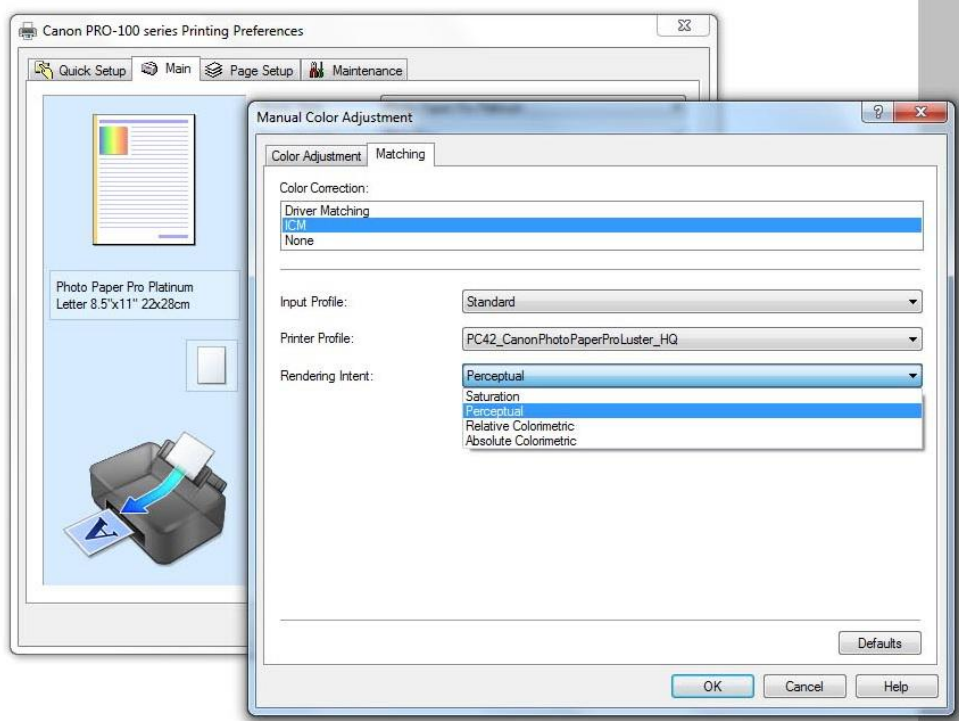
Now Under **Color Intensity**, choose **Manual** and click **Set**



In the next window that appears, you will choose the **Matching** tab and in the **Color Correction** Selection choose **ICM**.

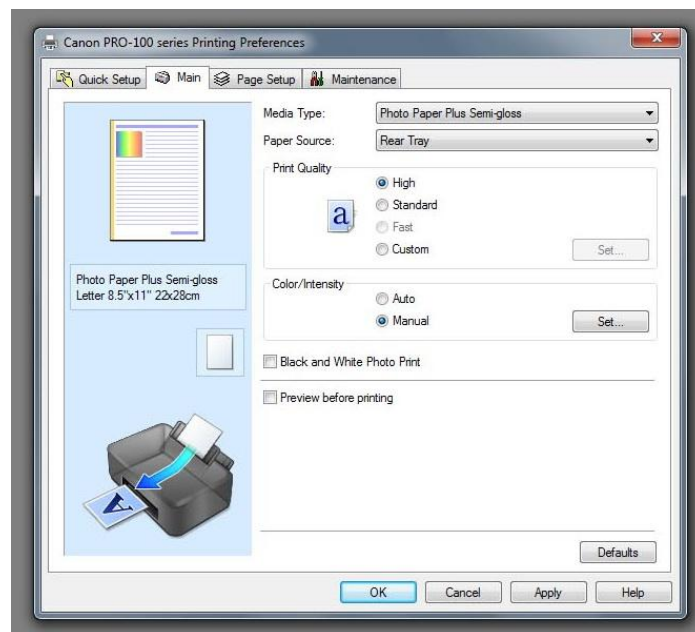


In the **Printer Profile** Selection, you are now presented with a series of ICC profiles from which to choose from. Select the appropriate ICC profile.



The next step is to choose the **Rendering Intent**. It is beyond the scope of this brief to explain the differences between the rendering intent but the two most generally used are Perceptual and Relative Colorimetric. You can choose between the two and see which produces better results for you. It will vary with the content of each image.

Finally, click on OK and then return back to the main window and confirm the paper settings and quality choices as per the ICC specs.



Now carefully choose your paper size etc.